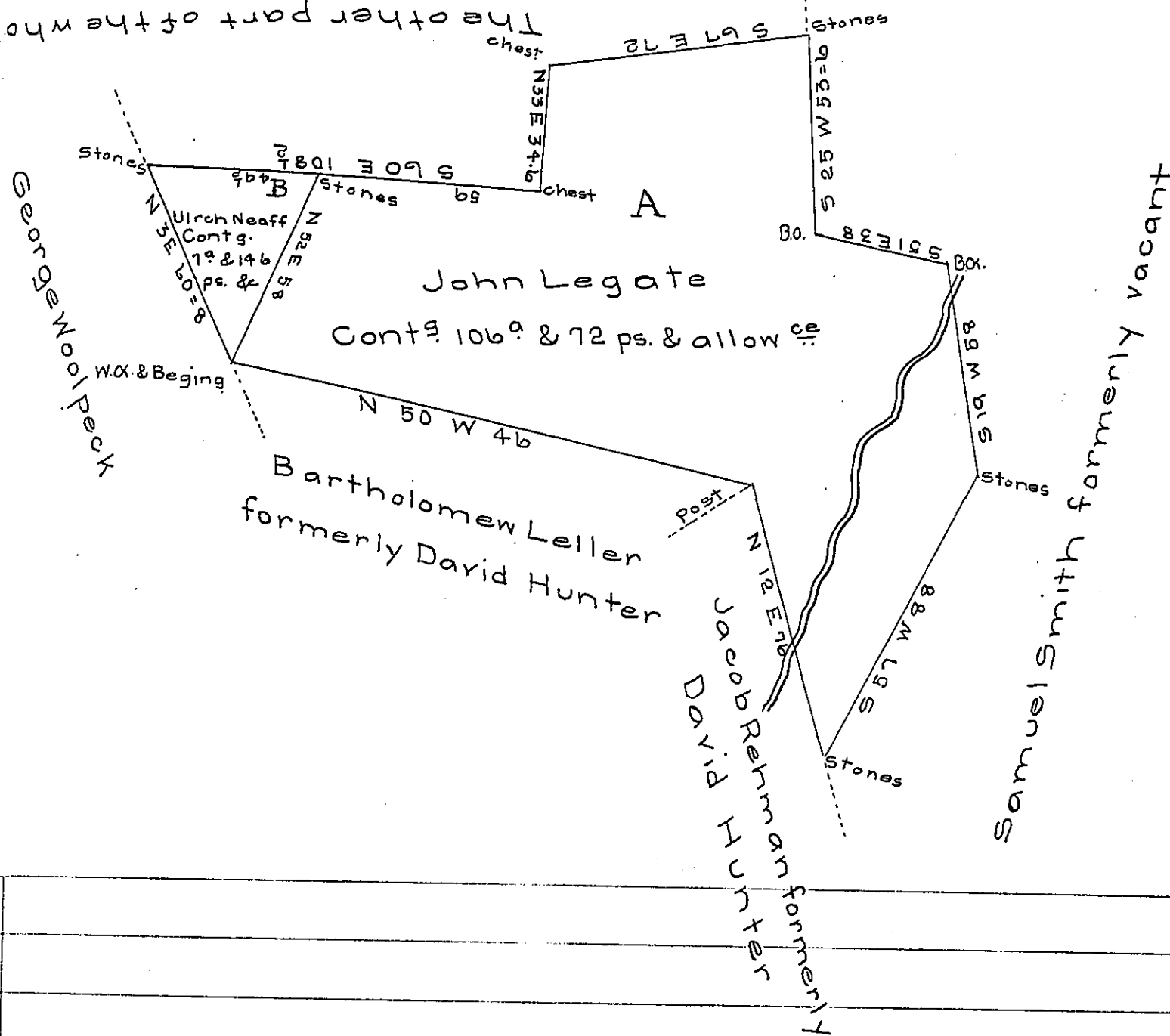


tract belonging to George Guyer  
The other part of the whole



part of two larger tracts }  
Surveyed as follows viz }

A Containing 106<sup>a</sup> & 72 ps. Surveyed for John Legate. In  
pursuance of a warrant dated the 18<sup>th</sup> of December 1751  
B Containing 7<sup>a</sup> & 146 ps & allow<sup>es</sup> Surveyed in pursuance  
of a warrant for 150<sup>a</sup> Granted to Ulrich Neff bearing  
date the 7<sup>th</sup> day of November 1788

IN TESTIMONY that the above is a copy of the original remaining on file in  
the Department of Internal Affairs of Pennsylvania, made  
conformably to an Act of Assembly approved the 16th day of  
February, 1833, I have hereunto set my Hand and caused  
the Seal of said Department to be affixed at Harrisburg,  
this fourth day of October 1905

*Geo. R. ...*  
Secretary of Internal Affairs.